



Logtag Dry Ice Temperature Logger

Specifically designed for Dry Ice

The Logtag Temperature Logger is designed for a temperature range of -80°C to 40°C . The Logtag has LCDs that lets you see at a glance that the system is working and if there has been a problem. At the press of a button, it allows you to mark significant events during its recording cycle. Now Multiuse, up to 1000 hours at -80°C

Uses	Features and Benefits
<ul style="list-style-type: none"> • Medical Research • Transport of Perishables • Veterinary Services • Blood Samples • Hospitals • Vaccines • Freeze Branding • Exporting • Frozen Goods • Meat and Small Goods • Seafood • Ice Cream & Confectionary 	<ul style="list-style-type: none"> • Ideal for dry ice applications • Automatic recording of temperature • Easy to download information • Reusable • Robust • Visual Alarm (LED) indicates temperature limit violation • No need for External Probes, but external probes available • Cleanable • HACCP Compliant

What is a Temperature Logger? The Logtag Low Temperature Logger is a “thermometer with a memory” that has been designed to record temperatures from -80°C to 40°C . The memory will hold up to 8,000 temperature readings.

Uses Log tag Software and Logtag reader to record and save your results.

How is it Used?

1. Set up how often you want the temperature recorded with the user-friendly Logtag software.
2. Place the Logtag into the area where temperature is to be logged.
3. When required plug the Logtag back into the computer and see exactly what happened, when and for how long.
4. Save your results for later reference.

Specifications			
Minimum Temperature	-80°C	Size	86mm x 54.5mm x 8.6mm
Maximum Temperature	40°C	Delay Start	Up to 45 days
Accuracy	0.5°C ; 0.7°C ; 0.8°C	Resolution	0.2°C or 0.1°C
Sample Rate	1 min to 255 mins	Log Storage Size	8000 readings
Housing Material	Polycarbonate	Guarantee:	3 Months

Logtag Accessories

Kits

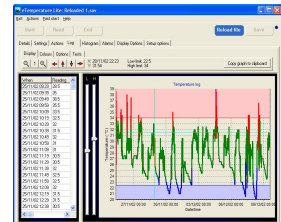
The Logtag kit is made up of the easy to use Logtag software, the Logtag reader and a case. The logtag software can be freely copied onto multiple PCs and the reader moved between those PCs.

Logtag Software

Logtag software allows you to quickly and easily

- Set up the Logtag sample rate, start delay, high and low alarms and rollover options
- Download the results from the Logtag to the PC
- Display results as a table
- Display the results as a graph. The graph supports panning and zooming to easily identify problems
- Save results for a later recall
- Export results to Microsoft excel, Microsoft Word
- Email results

(Minimum PC requirements: Pentium 200MHz; Windows 98,NT3.5, 2000, XP, 32Mmemory, 5MHDD free, mouse, CD-ROM.)



Reader



A reader (also known as a cable adaptor) is required to connect the Logtag to the PC. The reader has a USB connector for your PC

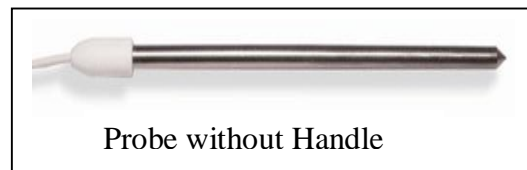


Probes

There are 3 probes available that are compatible with the Logtag. These can be inserted into the object that needs its temperature or humidity logged. Two probes are available. One that has a handle and one that does not have a handle. Cable lengths are 1.5 metres and 3 metres. (3 metre cables not in stock, please allow 1 week for manufacture.)



Probe with Handle



Probe without Handle



nSolution
OnSolution Pty Ltd. ABN: 36 093 811 271

OnSolution Pty Ltd

PO Box 1007
Baulkham Hills
NSW 2153
Australia

Ph: +61 2 9614 6417
Fax: +61 2 9614 6891
sales@onsolution.com.au
www.onsolution.com.au